

HILLINGDON LOCAL AREA SEND AND AP STRATEGY 2023-2028

Relevant Board Members	Councillor Jane Palmer, Joint Chair Keith Spencer, Joint Chair Councillor Susan O'Brien Julie Kelly, Director of Children's Services, LBH
Organisation	London Borough of Hillingdon Hillingdon Health and Care Partners
Report author	Abi Preston, Director of Education & SEND
Papers with report	<ul style="list-style-type: none">• Local Area SEND and AP strategy 2023-28• Easy Read Version SEND & AP Strategy• SEND & AP Ambitions Document

RECOMMENDATION

That the Board notes the Local Area Special Educational Needs and Disability (SEND) and Alternative Provision (AP) Strategy 2023-2028.

INFORMATION

Background

The new strategy is aimed at Hillingdon children and young people aged 0-25 years who have Special Educational Needs and/or Disability (SEND) or who attend Alternative Provision (AP), their families and the professionals who work with them.

The strategy was co-produced by the SEND Executive Partnership Board, with representatives from Hillingdon Council (education and social care), NHS NW London Integrated Care Board, education settings and Hillingdon Parent Carers Forum.

Following the previous draft version, feedback from the consultations with stakeholders was used, along with further use of data to understand our local area to create an updated version which aims to focus on our key priority areas. The new version also includes our strategy for Alternative Provision, which is in line with the new national SEND and AP improvement plan.

Extensive analysis of our recent data trends has been undertaken and included in the strategy to set the context of Hillingdon. It has also been written in line with the draft updated DSG Safety Valve plan, in order to ensure we are working towards the same goals of improving outcomes, provision and support whilst focusing more on early intervention and being more financially sustainable.

SEND and AP Context

The strategy is set within the national context and our statutory requirement to meet the needs of children and young people with SEND under the requirements of the Children and Families Act 2014. The strategic priorities have also been aligned to the Department of Education (DfE) SEND Review: Right Support, Right Place, Right Time (Green Paper) and the updated Ofsted and the Care Quality Commission (CQC) Local Area SEND Inspection Framework.

SEND and AP Strategic Vision

We want Hillingdon to be a place where children and young people with special educational needs and/or disabilities and their families lead happy and fulfilled lives from early years through adolescence to adulthood, in communities that accept and understand them.

SEND and AP Strategy – key ambitions for our children are:

Ambition 1:

The right support, at the right time, in the right place

We will improve children's and parents' experience of the SEND system by delivering the right support in the right place at the right time by focusing on early intervention, including an updated Childrens Integrated Therapies (CITs) contract to deliver therapies more effectively. There will be a focus on improving outcomes for all children with SEND, including those on SEND support and with EHCPs.

Ambition 2:

Fully inclusive education for all

We will support all schools and settings in Hillingdon to be inclusive and welcome children and young people with SEND. We aim to increase training across the area for professionals, including school staff, health and LA officers. We will also focus on reviewing and refining support for SEND children and those who access AP with their transitions, attendance, exclusions and for children with SEND who are vulnerable.

Ambition 3:

Provision meets the needs of Hillingdon's children and young people

We will deliver new, ambitious, and innovative provision that enables children and young people with SEND to receive excellent education in their local community. We will develop more places on a spectrum of provision to meet the needs of Hillingdon's children and young people. We will also review the funding approach to SEND across the borough and develop an outreach model to support mainstream schools with their SEND provision.

Ambition 4:

Children and young people live happy and fulfilled lives where they are included in the community

We will enable all children and young people to achieve independence, take part in activities they want to be part of, build good relationships and have meaningful outcomes in adulthood. We will look to support children with all aspects of their lives, including inclusivity of accessing clubs and post 16 options to enable young people to access work, internships or employment. We want our children and young people's voices to be central to all we do and to also improve support for children with SEMH needs across the Borough.

Ambition 5:

There is a flexible offer and range of interventions available for children to access Alternative Provision

We will create a three-tiered model for Alternative Provision that offers flexible interventions and supports children back into mainstream where possible. We are looking to work with providers to increase the proportion of children who are integrated successfully back into mainstream settings, reduce reliance on tuition for children and improve the commissioning of AP so we have a more flexible approach to Alternative Provision.

An easy read version is available and currently being shared with young people for feedback to find out whether it is presented in the most effective way for our residents.

Outcome of SEND Consultation

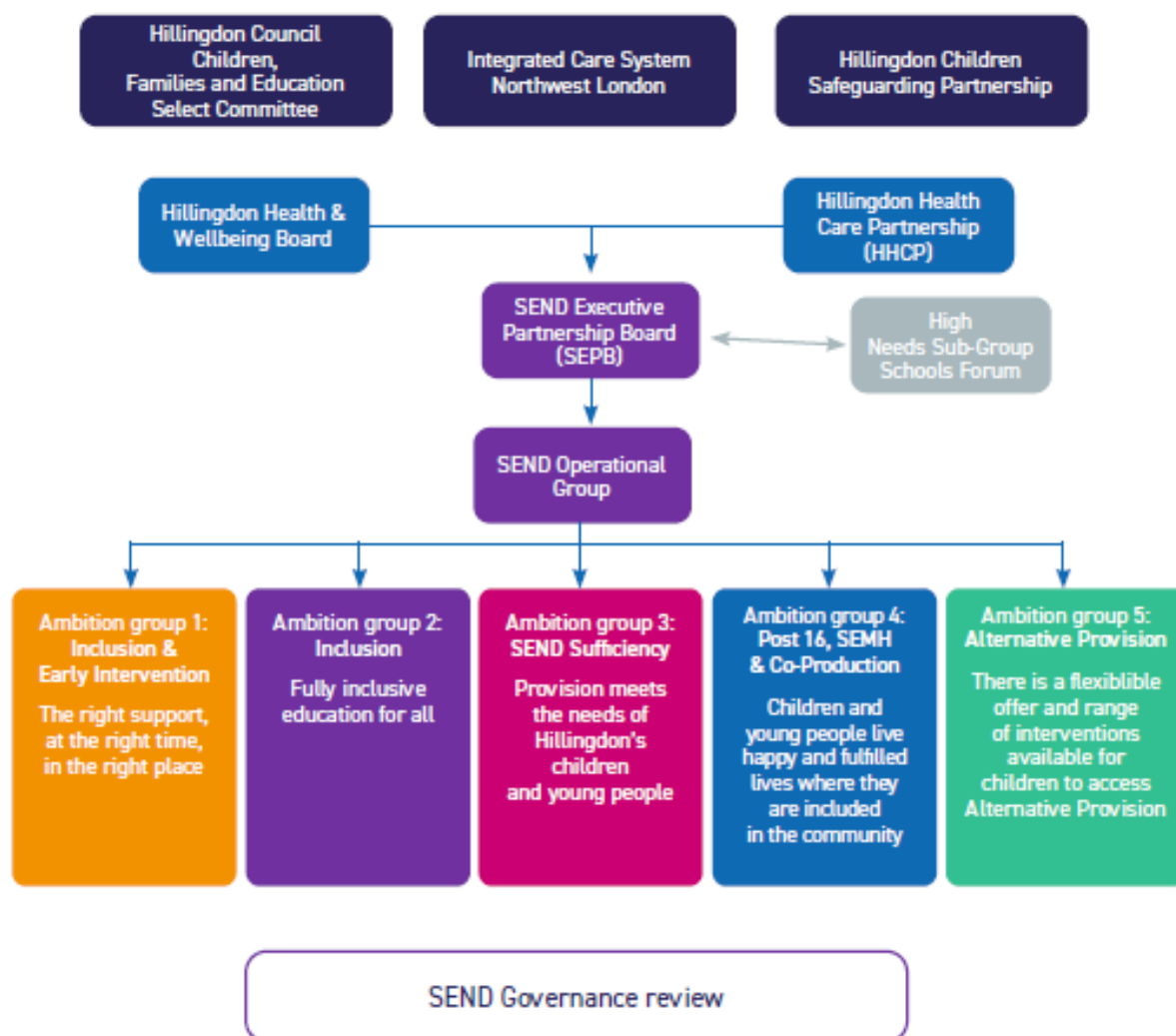
Formal public consultation on the initial version of the draft strategy took place from 14 July to 18 August 2022, and a consultation survey along with the strategy was launched on the Council and Local Offer website, with Easy Read versions made available. The survey asked respondents to comment on the overarching vision and the original three key priorities. At this stage, this strategy was focused just on SEND.

Consultation feedback has been used to reshape the strategy into a new version with 5 new key ambitions and to include AP alongside SEND so it is a joint strategy, in line with the new improvement plan. The new version of the strategy was shared with SEPB, schools, Parent Carer forum and a range of partners throughout October and November 2023. The consultation was also shared on the Local Offer and children and young people's views were sought through consulting with Stepping Out (16 year olds), Step Up (12 to 15 year olds) and Youth Voice groups in November 2023. All groups supported the new strategy, although there was some hesitation shared by professionals in our education settings.

- Members of SEPB, Education and social care teams confirmed the vision and priorities as a positive framework for improving SEND & AP provision and outcomes for children and young people.
- All children in the various consultation groups (including feedback received from the Local Offer completed by young people) demonstrated that they supported the ambitions and aims of the strategy. They are keen for their voices to be heard more by schools, for their behaviour to be understood more and for more inclusion to be in place so they feel involved and accepted in their education settings.
- Feedback from schools and governors suggested the majority of school professionals supported the strategy and the priorities, there were some concerns raised about the funding and the levels of inclusion aimed for in mainstream schools.
 - 76% agreed with the principles in the strategy, 16% stated other, 12% did not agree
 - 51% agreed with the ambitions, with 24% stating they didn't know and 24% not agreeing.
 - The main concerns related to the national policy in the strategy such as an increased focus on children with EHCPs attending mainstream settings where possible, which schools are not supportive of in some cases and concerns around funding changes. A revamp of our approach to funding is included in our plans within the strategy and work is underway to develop a new framework for funding and provision.

SEND & AP Priority Groups and Governance

Previously, we had six established priority group workstreams which were overseen by the SEND Operational Group, reporting the progress against plans to Hillingdon's SEND Executive Partnership Board. The groups have been reorganised to reflect the five new ambitions. The membership of these groups is being reviewed and action plans are being created to ensure outcomes are achieved and monitored. The new governance model is shown below:



We are working closely with our partners across SEND & AP to have a strong and effective local area partnership approach to all matters relating to SEND and AP. The new inspection is focused on the partnership approach to SEND & AP therefore we are creating a new local area logo to reflect this. A competition was recently launched for all children to have an opportunity to design the new logo and after a range of creative submissions, a winner has been selected. We are in the process of getting the new logo created digitally and we will share this in due course.

5. EFFECT ON RESIDENTS, SERVICE USERS & COMMUNITIES

Through the consultation process Hillingdon residents and, particularly those with children and young people with SEND and who access AP, were given the opportunity to share their views on the identified key priorities and approach. We listened to residents and the Parent Carer Forums and shaped the Local Area SEND & AP Strategy in light of their comments and views.

The strategy outlines the Local Area's commitment to improving the outcomes for children and young people with SEND and those who access AP and will encourage active engagement and participation from parents, carers, and young people in strategic developments.

BACKGROUND PAPERS

[Local Area SEND and AP strategy 2023-28](#)

[Easy Read Version SEND & AP Strategy](#)

[SEND & AP Ambitions Document](#)